

MADE

by Laminex

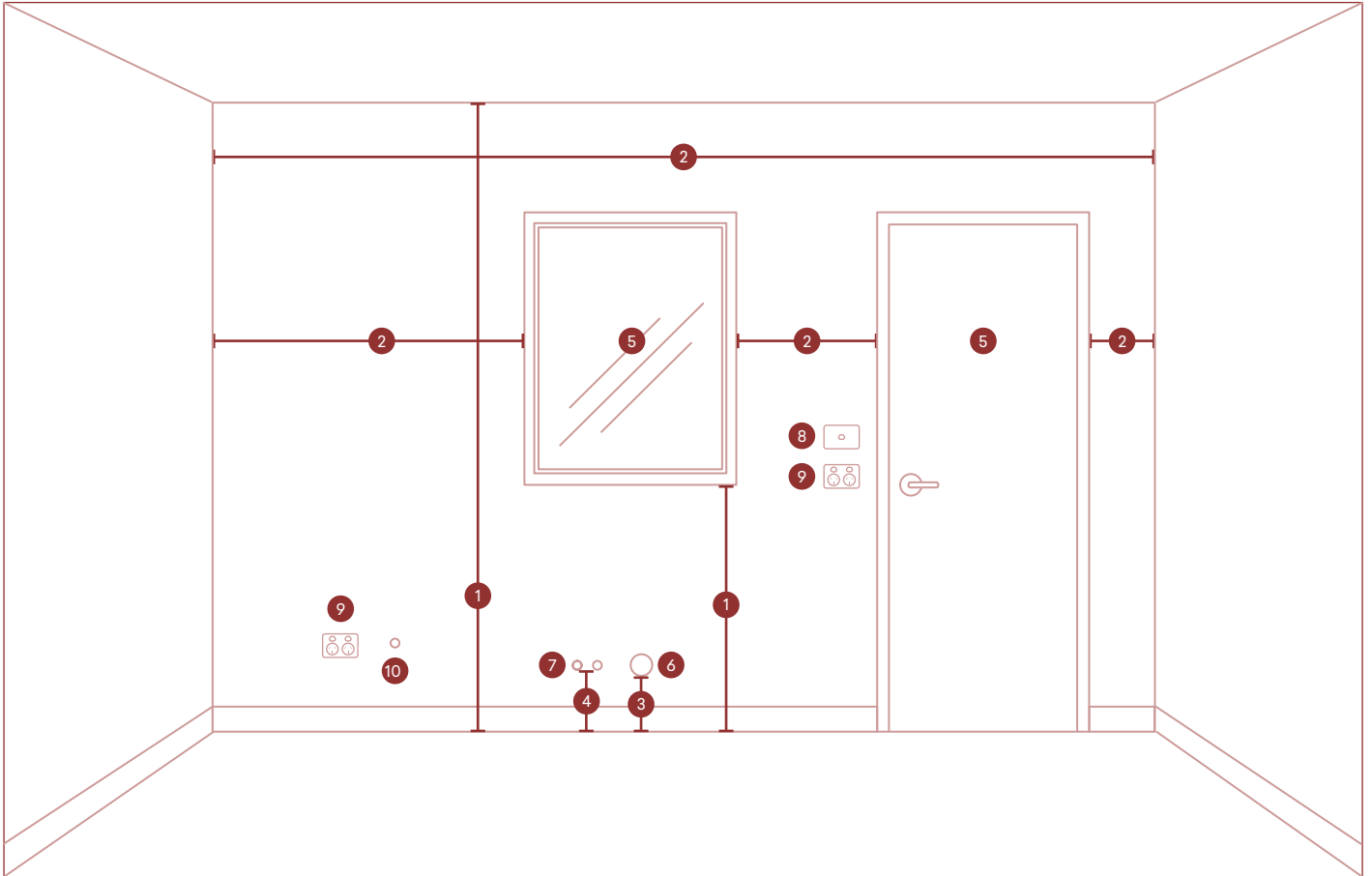
Measuring guide

Before designing your dream space, it's important to accurately measure everything. This will ensure you can maximise your space and storage, and provide a seamless design and installation process.

Follow the steps in this guide to ensure you have clear and accurate measurements.



You'll need to measure and mark the following:



- | | | | |
|---|--|----|--|
| 1 | All vertical wall measurements, e.g. floor to ceiling/bulkhead, floor to window | 6 | Mark wall waste pipe with 'WWP' or floor waste pipe with 'FWP' |
| 2 | All horizontal wall measurements, e.g. wall to wall, wall to window, wall to door | 7 | Mark incoming water source with 'IWS' |
| 3 | Measurement of wall waste pipe to floor OR floor waste pipe to wall* | 8 | Mark light switches with 'LS' |
| 4 | Measurement from floor to incoming water source | 9 | Mark power points with 'PP' |
| 5 | Mark doors with a 'D' and windows with 'W' (measure doors and windows to the outside of the frame) | 10 | Mark gas service points with 'G' |

*A waste service point carries waste water out from your kitchen sink. It will flow out through either the floor or the wall. If it flows through the wall, you'll need to take the vertical measurement from the floor to the pipe in the wall. If it flows through the floor, take the measurement from the middle of the pipe to the wall.

Step 1: Draw your space

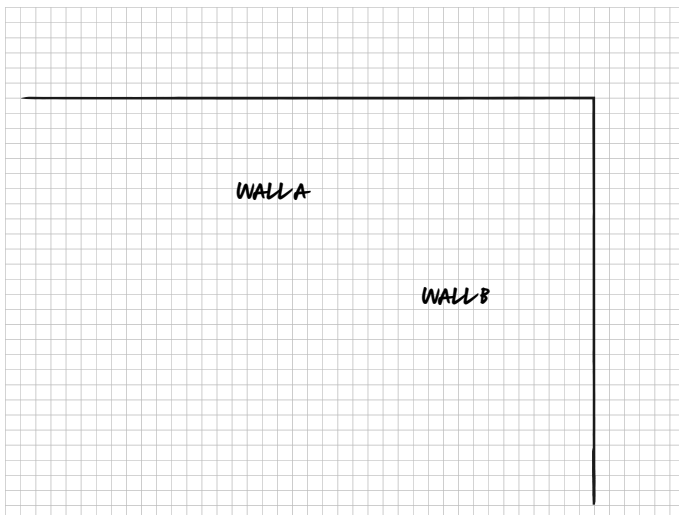
The first step is to draw your space. You can use a blank piece of paper, or print the gridded pages at the end of this guide.

Draw your current space layout as viewed from above (top view).

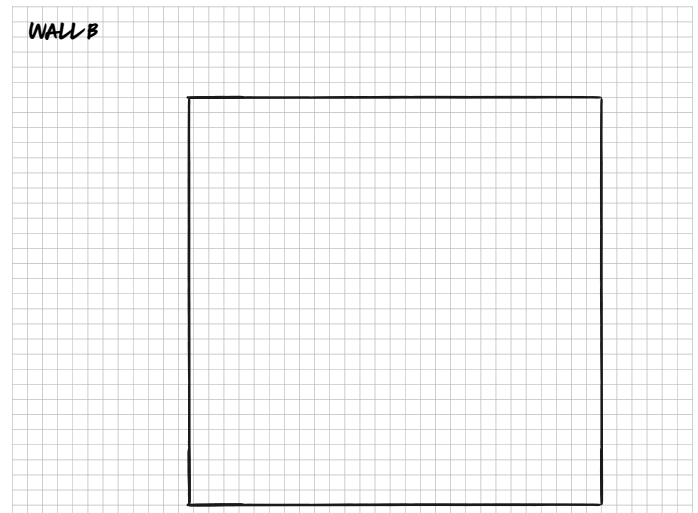
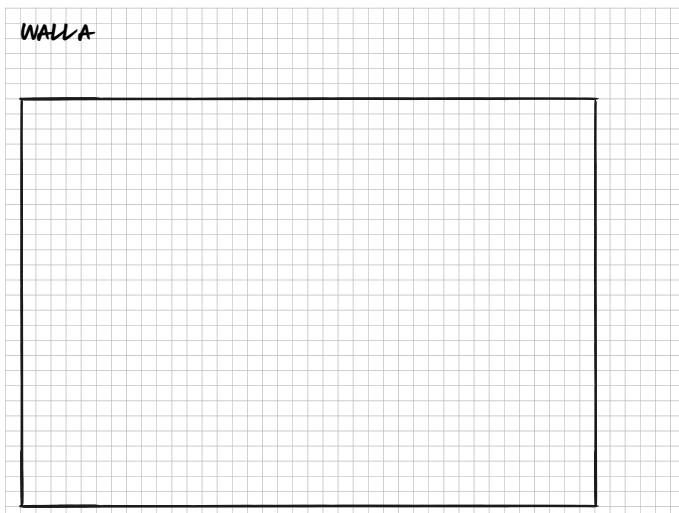
Next, using a different piece of paper, draw your current layout but this time viewed from the front.

You will need to draw a different front view for each wall in your space. In this example we are using an L shaped kitchen, so we will show two front views, one for each wall. Label the walls on each drawing.

Top view example



Front view examples

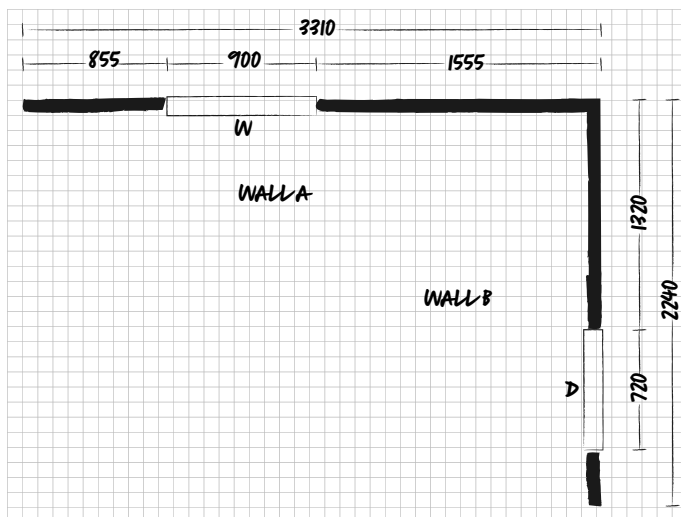


Step 2: Horizontal measurements

The next step is to take the horizontal measurements in your space. Mark them on the top view drawing.

- Walls - measure the full width of each wall including those with and without cabinetry.
- Windows - measure each window width, the space between each window and the walls to window/s measurement. Always measure to the outside of the window frame. Mark windows with a 'W'.
- Doors - measure each door height. Always measure to the outside of the door frame. Mark doors with a 'D'.
- Any other obstacles - measure anything else including pillars, beams, balustrades, low ceilings etc.

Top view example



Expert tip

Invest in your tools—use a tape measure in good condition (with no kinks or bends), or invest in a laser measure (digital measuring tool).

For consistency, always measure in millimeters. This is the most common unit of measurement used in Australia and will allow for easier ordering, project management and installation.

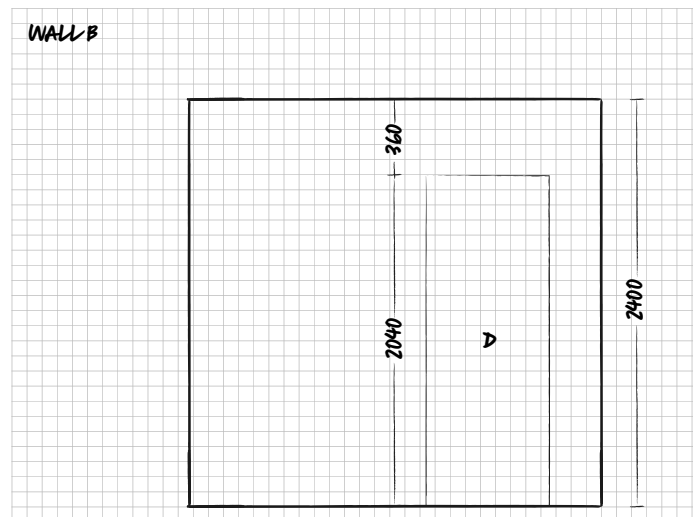
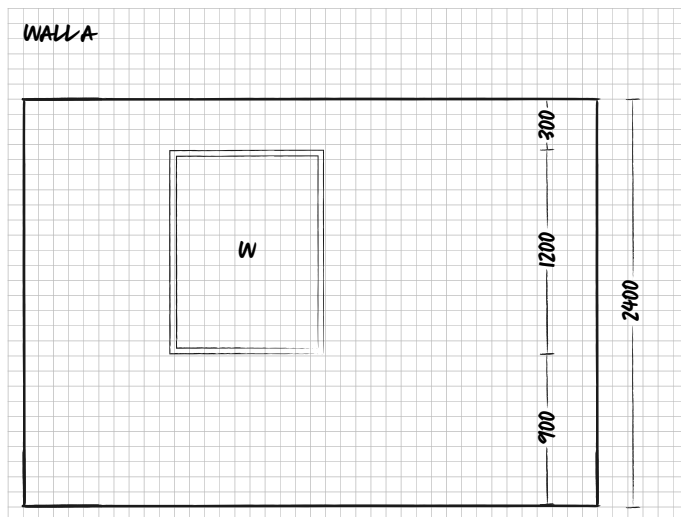
To ensure your measurements are accurate, double-check them. Measuring twice can save you time and money down the track!

Step 3: Vertical measurements

The next step is to take the vertical measurements in your space. Mark them on the front view drawings.

- Walls - measure the full height of each wall including those with and without cabinetry. Ensure you measure from the finished floor level.
- Windows - measure each window height, from the floor to bottom of windows and from the top of windows to the ceilings. Always measure to the outside of the window frame. Mark windows with a 'W'.
- Doors - measure each door height. Always measure to the outside of the door frame. Mark doors with a 'D'.
- Any other obstacles - measure anything else including pillars, beams, balustrades, low ceilings etc.

Front view examples



Expert tip

Identify any uneven walls or floors by repeating your horizontal and vertical measurements 600mm in from the edge of the wall.

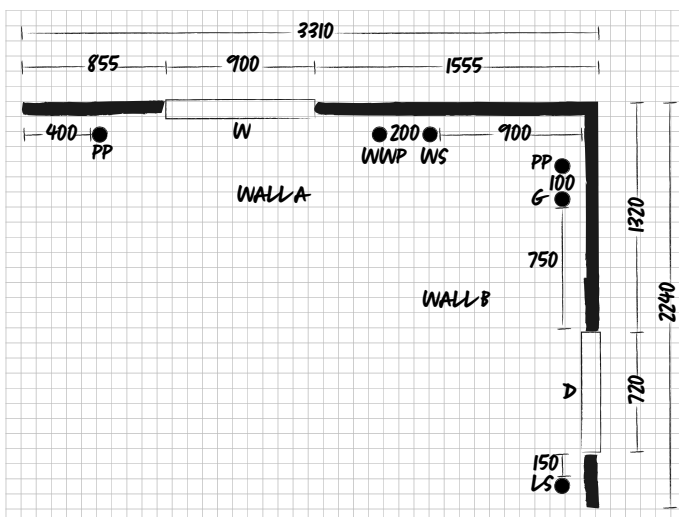
If you discover your walls are not square, you may consider adding wall panels or re-plastering your walls to ensure a square working wall.

Step 4: Mark all service points

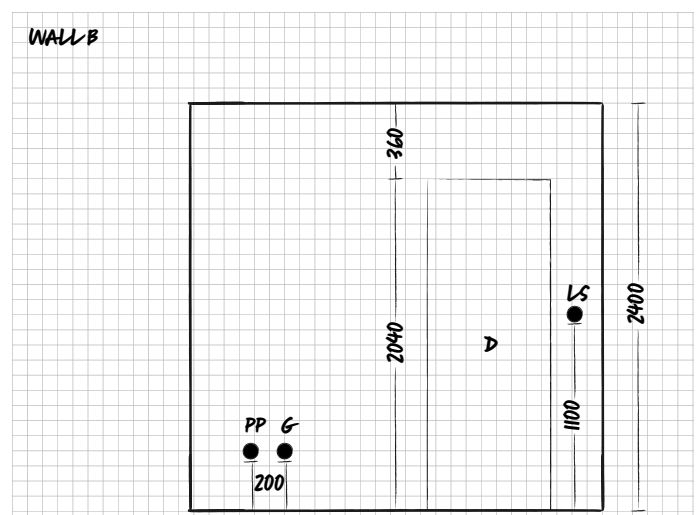
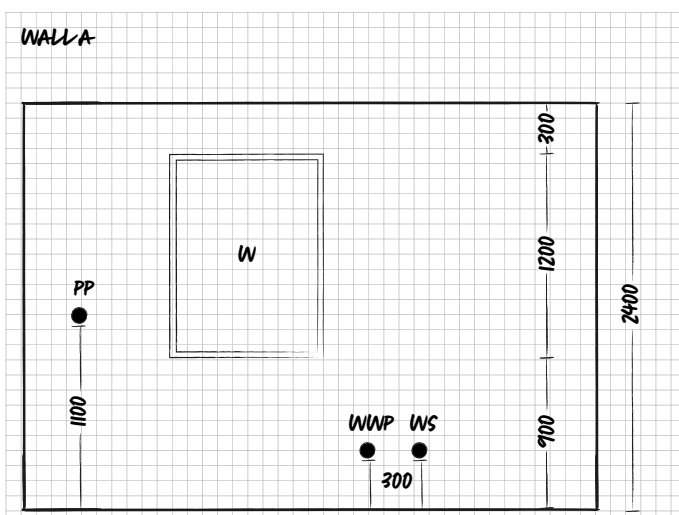
The next step is to measure and mark all the service points in your space.

- Incoming water source - usually under your sink cabinet (mark 'WS').
- Waste water service points - either a wall waste pipe (mark 'WWP') or floor waste pipe (mark 'FWP').
- Power points - including those concealed in joinery, and those servicing cooktops and ovens (mark 'PP').
- Gas service points - servicing cooktops and ovens (mark 'G').
- Light switches (mark 'LS').
- Also mark the current locations of your fixed appliances—oven, microwave and fridge.

Top view example



Front view examples



Step 5: Design your space

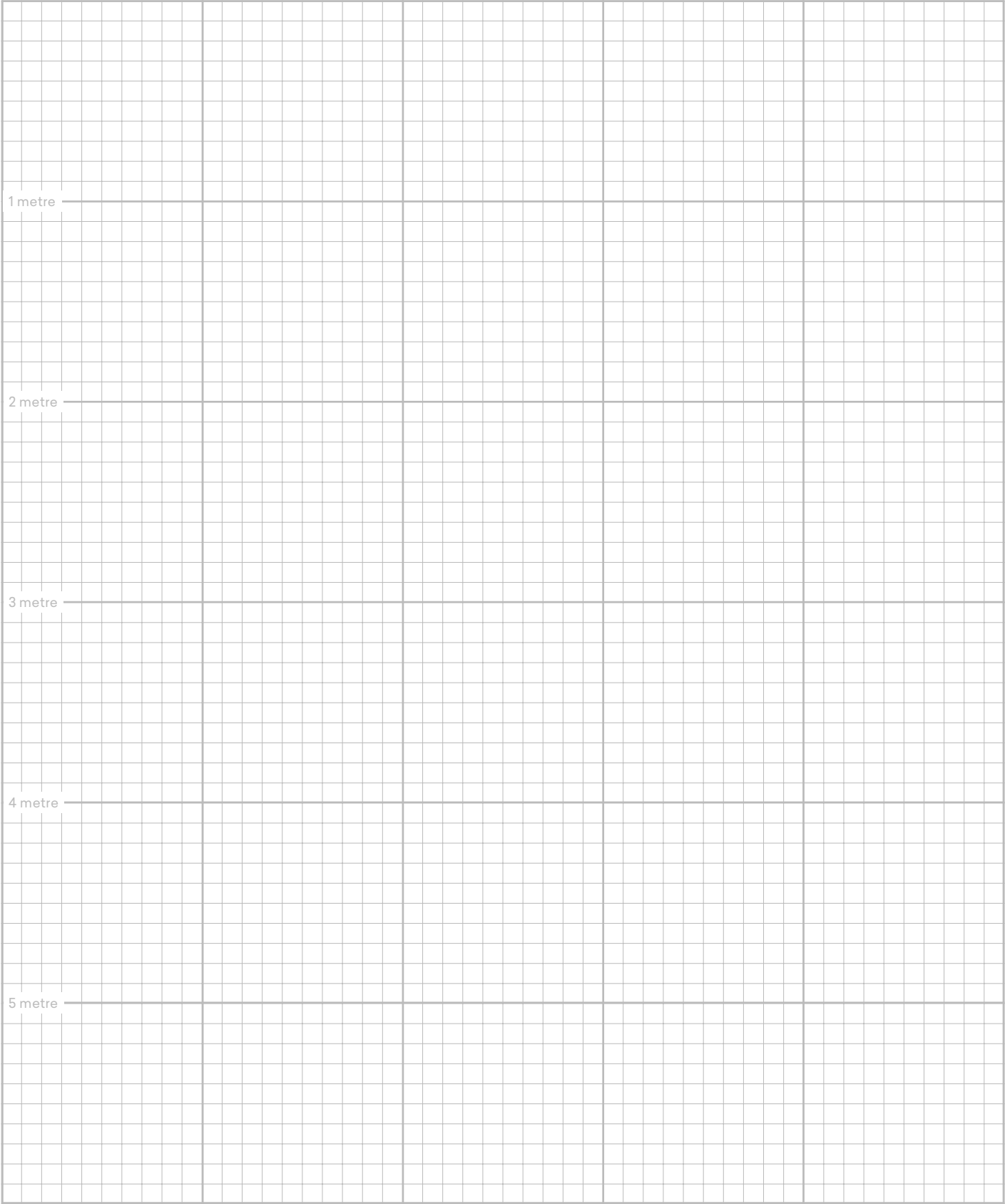
Now you're ready to design your new space!

Once you've measured your space and then completed the Design Brief, visit the MADE by Laminex showroom and create your new space with one of our designers in a detailed 90 minute one-on-one consultation.

Contact our showroom on (03) 8509 7501 or email made@laminex.com.au to book your consultation.

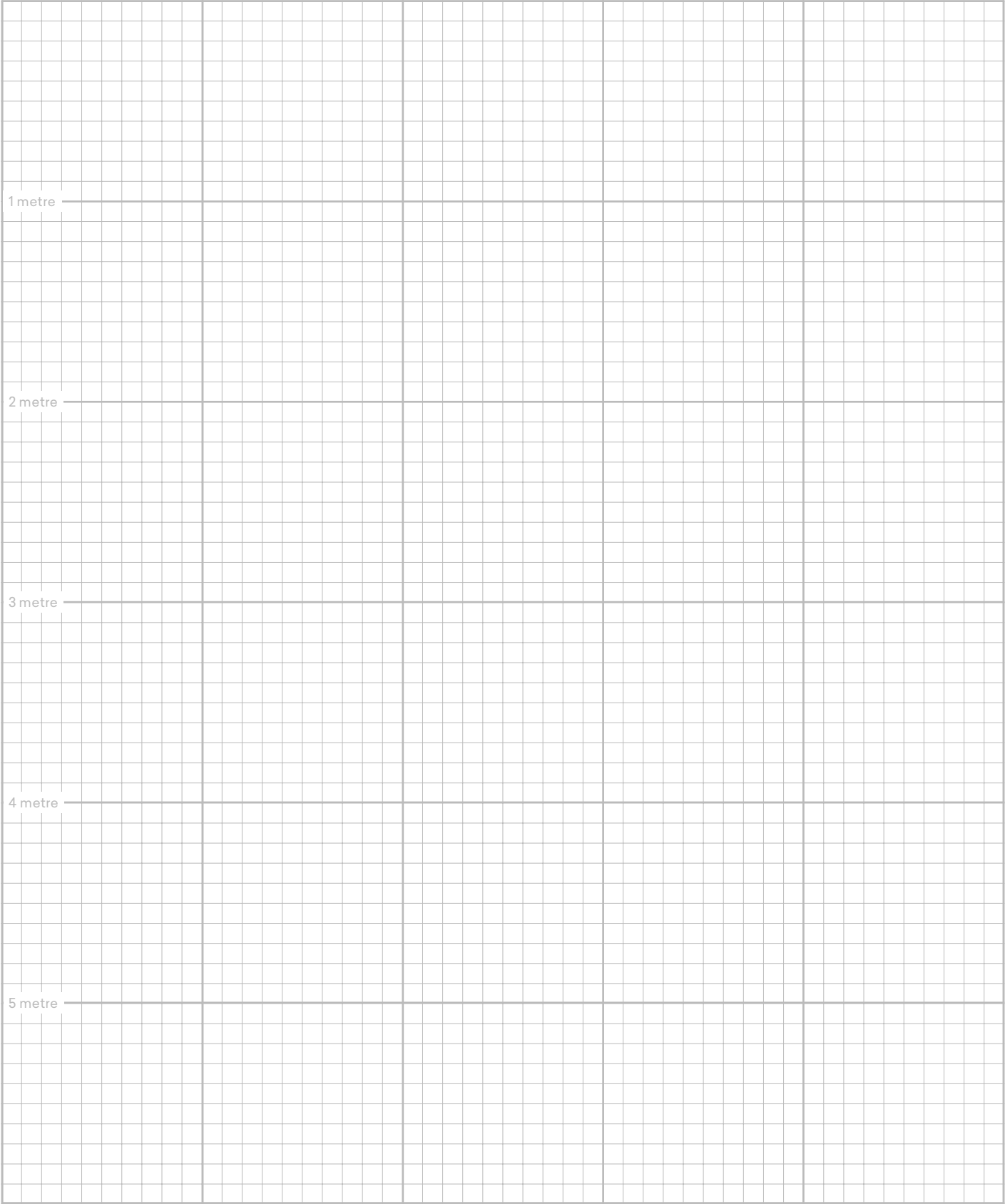


Top view



Note: One square represents 100mm.

Front view



Note: One square represents 100mm.


Visit us

For the location of your closest showroom or for more information, visit madebylaminex.com.au

Call us

For enquiries call 1300 990 225

Follow us

-  facebook.com/madebylaminex
-  au.pinterest.com/madebylaminex
-  instagram.com/madebylaminex
-  youtube.com/madebylaminex

Laminex is manufactured, marketed and distributed by Laminex Group Pty Limited ABN 98 004 093 092.

The colours and finishes for all imagery and product swatches in this brochure may vary due to paper, printing processes and photographic lighting. For an accurate representation of the product, please view a physical sample.

All technical information including SDS, Technical Data Sheets, Fabrication & Installation Guide and Warranties are located at laminex.com.au.

MADE
by Laminex®